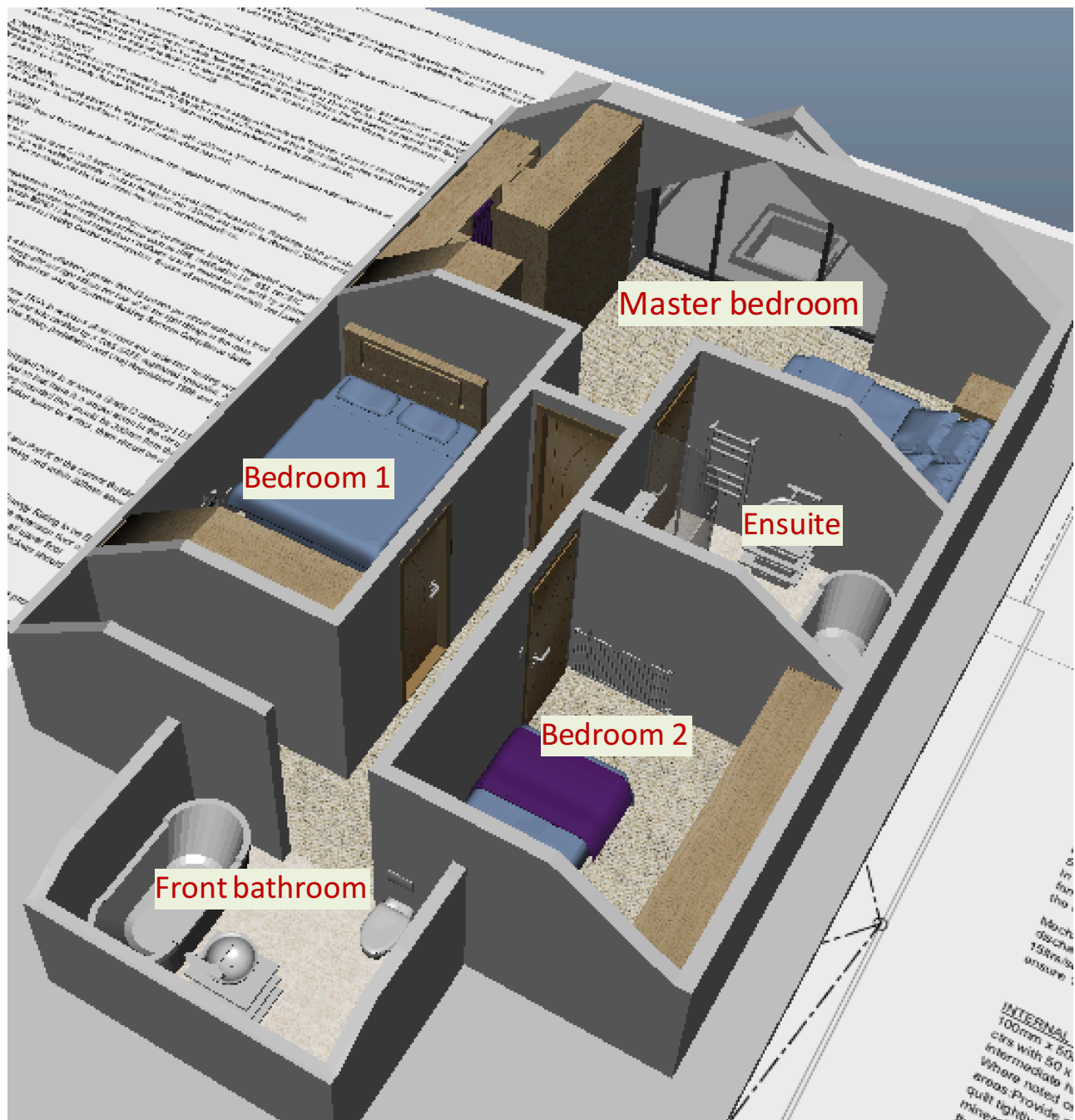


# 10 st georges - first floor plumbing

Tuesday, 19 December 2017

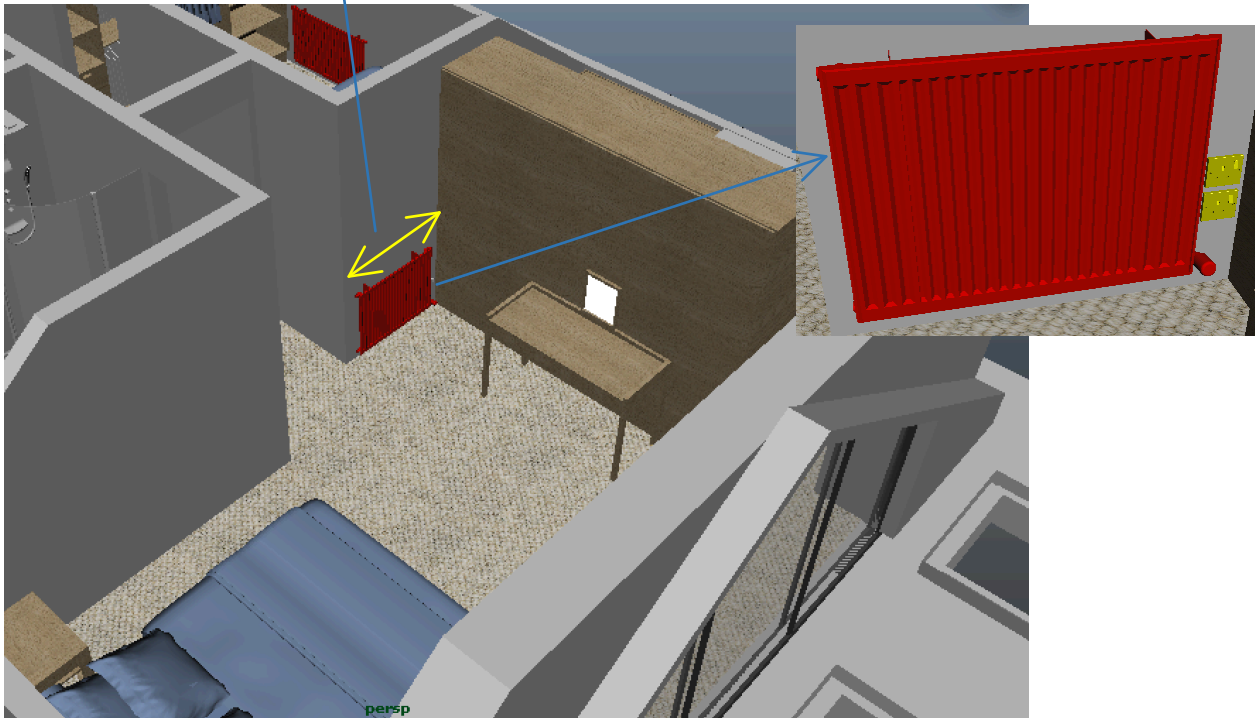
23:56



## Master bedroom

Maximum 0.98m

2 single sockets on top of each other or 1 double socket rotate 90 degree

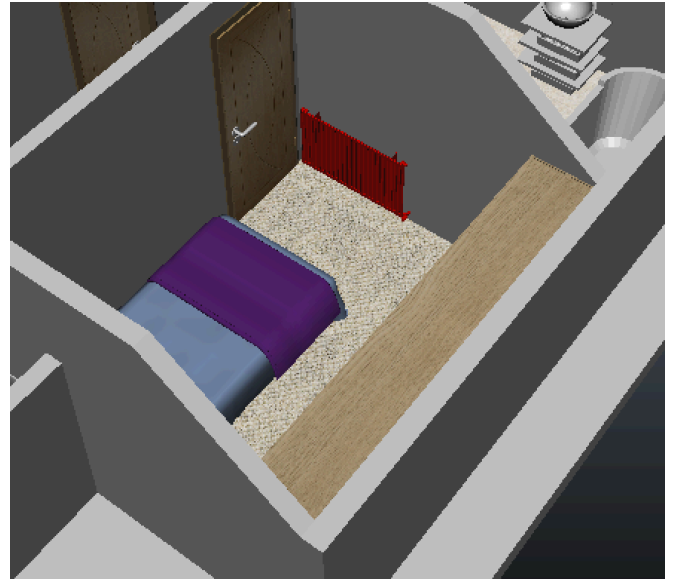
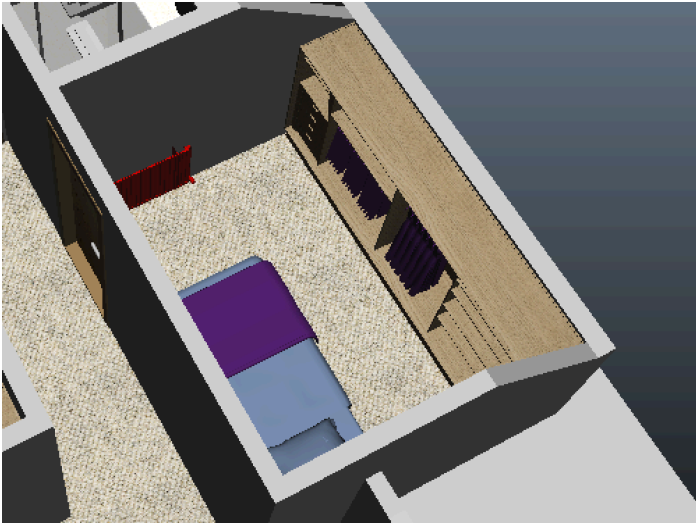


\*we are not sure whether the radiator is big enough for the master bedroom, if it is too small, we can go for tall panel radiator here.

## Bedroom 1



## Bedroom 2



Radiator behind the door, we are not sure it is able to do that, if not it can be in the middle of the wall.

## Ensuit



Towel rank behind the door.